

# XOMOX<sup>®</sup>

brands you trust.



Process Valves & Actuators

**CRANE**

ChemPharma Flow Solutions

[www.cranepharmaceutical.com](http://www.cranepharmaceutical.com)



## Worldwide capabilities pay off for Xomox customers.

With facilities in a dozen countries around the world, Xomox has unique capabilities for global sourcing of the latest technologies, innovative materials, and the most sophisticated manufacturing techniques.

The Xomox team turns these resources into problem solving valves for your most demanding applications.



## Problem solvers.

Talk with a Xomox Sales Engineer about any aspect of your fluid handling system. You will get process improving answers.

Your Xomox Sales Engineer has the proven products and is backed by the technical expertise to help solve your toughest fluid handling problems.



## Customer focus, customer satisfaction.

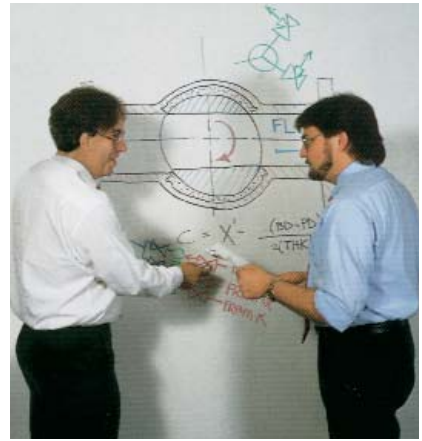
Xomox strives to fully understand your unique needs, and cost-effectively fulfill your requirements.

Processors know they can depend on Tuflin valves and Xomox actuators for trouble free performance and superior service.



## Processor partnerships.

Xomox people work closely with chemical processors. Partnering helps produce innovative, cost-effective valve products.



## Patented performance.

Xomox valves and actuators incorporate a host of patented, exclusive, and unique features not available from any other manufacturer.



## Emissions control leadership.

Xomox strongly champions testing procedures that precisely evaluate valve emission control performance, over time, in realistic applications.

You can breathe easier, knowing Xomox offers the broadest line of valves to handle hazardous media and control fugitive emissions.

## Valve types.

Xomox valves are available in a broad range of valve types for virtually every processing requirement in your most demanding applications.

## Materials.

Xomox valve materials range from carbon steel to the most exotic alloys. You can also choose from many specialized lining and sleeve materials to suit media and temperature requirements.

## Sizes.

Various Xomox valves range in size from 1/2" to 102".

## Pressure Classes.

Xomox valves are available in ANSI Classes 150, 300, and 600.

## Temperature ratings.

Xomox offers valves for cryogenic service, for extreme thermal cycling, and for high temperature applications up to 1300°F.

Available materials, sizes, options, and special configurations vary between valve types.

## Single-source responsibility.

With Xomox . . .

- Family of valves
  - Actuators & Control Accessories
  - Xomox problem-solving expertise
- . . . you are assured of single-source responsibility for valve packages that will provide optimum performance in your applications.

Xomox Automation & Service Centers are strategically located to provide comprehensive . . .

- Automated valve packages
- Valve modifications
- Valve repair
- Application assistance

## Dramatically reducing the cost of valving.

Processors who compare various types and brands of valves in demanding applications find a huge difference in the real cost of the valves over time.

## Savings of tens-of-thousands of dollars.

When the formula below is used to compare Xomox with other valves, the results often indicate that there is a tremendous difference in the long-term cost of ownership.

That's because Xomox valves are designed to pay off at the bottom line with reduced maintenance requirements and greatly extended service life.

## Valve cost control calculations.

Calculate the life-time cost of valving and compare the true cost of valves over time.

**+** *Initial valve price* **x** *the number of original and replacement valves in the application*

**+** *Monitoring and maintenance costs (and associated downtime costs)*

**+** *Parts and repair costs (and associated downtime costs)*

**+** *Costs associated with proper disposal*  
**x** *the number of valves replaced*

---

**=** *Total cost of valve ownership over time*

## Put Xomox valves to the test.

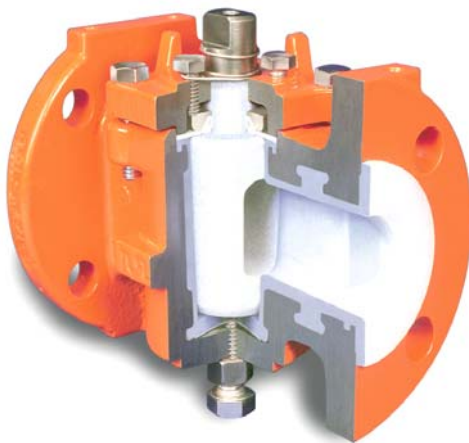
Compare your present valves and Xomox valves in your most demanding application. You may soon discover there is no comparison.

*Do the math. For valves in demanding processing applications, . . . real value is performance over time.*

# Fully Lined Valves & Accessories

## Tufline Fully Lined Plug & Ball Valves

- These valves are more versatile, and often out-perform alloy valves.
- More economical than alloy valves.
- With FEP and PFA lining, cast, dovetail recesses and machined grooves lock the lining to the valve body casting. The locked-in lining is virtually impervious to shrinking, stress-cracking, collapse, or blowout.
- Unlike alloy valves, there is no need to inventory different valves for various applications.
- There is less chance of costly and dangerous installation errors.
- Media contamination is prevented.
- Positive shutoff.
- FEP and PFA locked-in lining.

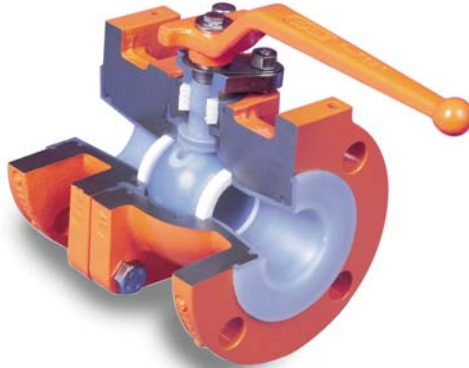


2-way fully lined plug valves



3-way fully lined plug valves

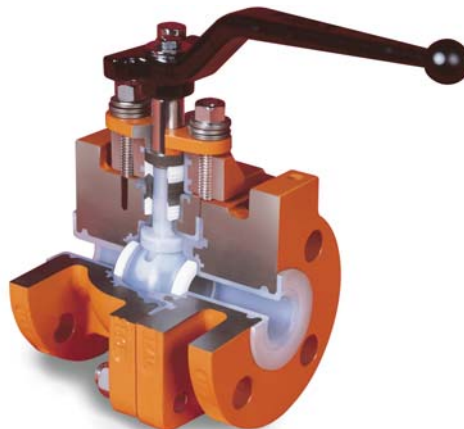
- Tufline Lined Ball valves have a metal-to-metal body joint to control compression of the liner for assured sealing.
- The seats are easily and quickly replaced.



Standard port lined ball valves



Full-port lined ball valves



Both the standard and full-port valves are available with extended packing for enhanced control of fugitive emissions.

## Tufline Fully Lined Butterfly Valves



- Lower torque ratings.
- Continuous disc/shaft lining.
- Triple O-ring stem sealing components are all isolated from corrosive flow media.
- Spring washer live loaded stem packing.
- Slim profile disc.
- Completely enclosed shaft bottom. No springs, seals, or washers to corrode or fail.
- Face-to-face dimensions meet API 609 specifications.

### PFA lining:

- More flexible and less bulky for more reliable and tighter sealing.
- Excellent permeation resistance.
- High Cv values.



Xomox® valves are lined with DuPont™ Teflon® fluoropolymer.

# Jacketed Valves

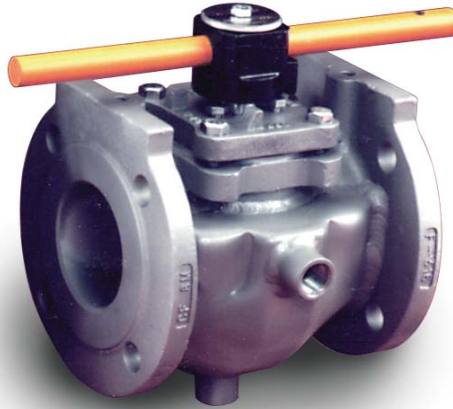
## Tufline Fully Lined Accessories



Tufline Fully Lined Accessories are a reliable and economical alternative to costly high-alloy products.

- Wafer Swing Check Valves
- Ball Check Valves
- Piston Check Valves
- Sight Flow Indicators
- Strainers
- Tank Bottom Valves
- Poppet Check Valves
- Clamp Valves

Tufline jacketed valves provide innovative solutions for handling condensable, solidifying, or highly-viscous commodities such as sulfur, polymers, resins, pitch, and other temperature sensitive fluids.



Tufline fully-jacketed and partially-jacketed sleeved plug valves, including 3-way valves.



Jacketed, steam traced and jacketed-high-performance butterfly valves for rail tank car service.

- These rapid-draining, bottom-mounted, bottom-operated valves provide safe, reliable, and economical service in rail tank cars.
- The low-profile design significantly reduces skidding costs.
- AAR approved (Approval Number E049006).



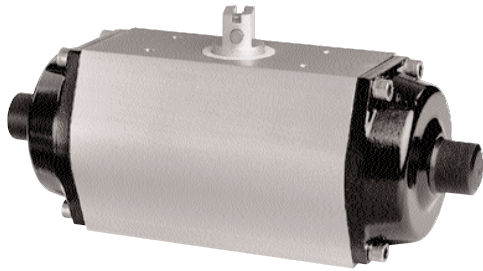
Tufline steam traced and jacketed butterfly valves provide patented, triple-point prevention of media solidification.

- Both the shaft and the bearings are fully heated.
- The steam is channeled from the shaft, around the full perimeter of the disc, and out the bottom shaft.
- A separate steam path circulates through each side of the body assuring complete and maximum temperature control.



Tufline jacketed metal-seated plug valves.

# Xomox Actuators & Automation Accessories



## Xomox XRP™ Actuators

The unique features of Xomox XRP Pneumatic Rack & Pinion Actuators include:

- A balanced pinion which does not require an external retaining clip to prevent the pinion from blowing out.
- Individual single point adjustment for both the CW and CCW directions.
- 98 degrees of total travel on the most popular sizes.
- Vertically aligned air passages allow increased air flow minimizing cycle time.



## Xomox Limit Switches

A wide variety of switching options and other automation accessories are available.



## Matryx® Rack & Pinion Actuators

Matryx® Rack & Pinion Actuators have a unique suspension system that guides each piston smoothly through its complete stroke, insuring consistent torque output.



## Matryx® Vane Actuators

Matryx® Vane Actuators provide reliable and efficient remote control of any type of rotary operation. They are used for ball, plug, and butterfly valves as well as other mechanisms such as dampers, switches, and safety devices. They are available up to 30,000 in-lbs of torque.



**Xomox Automation & Service Centers** are located throughout the United States. They provide:

- Automated valve packages
- Valve modifications
- Valve repair
- Application assistance
- On-site inventories of valves, actuators, and accessories assure fast turn-around.
- A new-valve factory warranty backs every automated, modified, and repaired valve.



The Xomox Sizing Program will help you design a more efficient and economical processing system and assure proper actuator size selection.

# XOMOX®

CRANE ChemPharma Flow Solutions™  
4444 Cooper Road, Cincinnati, OH 45030

Tel: (513) 745-6000

Fax: (513) 745-6086

[www.xomox.com](http://www.xomox.com)

[www.cranchempharma.com](http://www.cranchempharma.com)

**CRANE**

ChemPharma Flow Solutions

**brands you trust.**

CRANE Chempharma Flow Solutions Include: Pipe - Valves - Fittings - Actuators - Pumps

**DEPA®**

**ELRO**

**RESISTOFLEX®**

**ResistoPure**

**revo®**

**Saunders®**  
*the science inside*

**XOMOX®**

© 2009 CRANE ChemPharma Flow Solutions, [www.cranchempharma.com](http://www.cranchempharma.com)